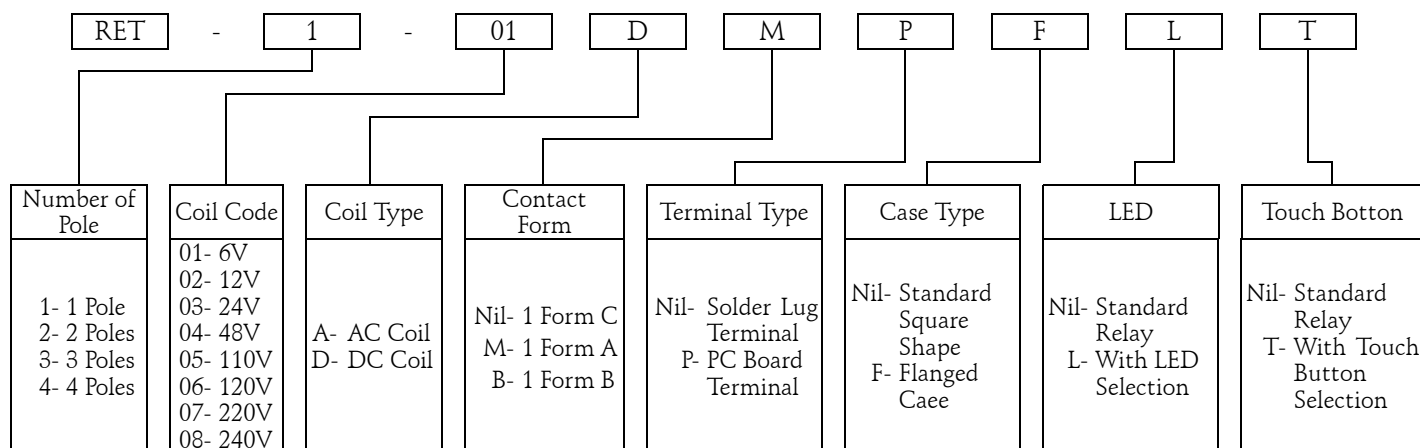


Coil Specification (at 20°C)

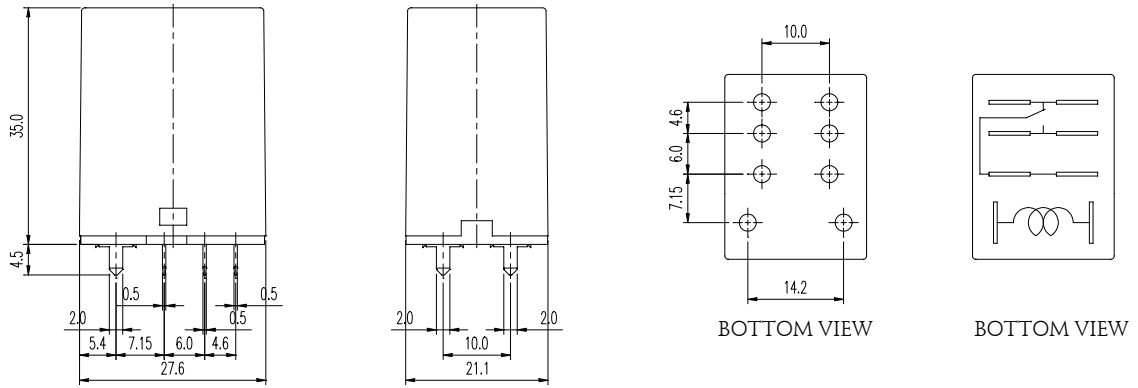
Coil Sensitivity	Coil Voltage Code	Nominal Voltage (VDC)	Nominal Current (mA)		Coil Resistance ($\Omega \pm 10\%$)	Power Consumption	Pull-In Voltage (VDC)	Drop-Out Voltage (VDC)	Max.Allowable Voltage (VDC)
			50 Hz	60 Hz					
RET 1-P & 2-P AC Coil	01	6	282.7	214.3	10	Abt. 1.0 to 1.3 (60Hz)	80% Maximum	30% Minimum	110%
	02	12	106.2	94.9	40				
	03	24	52.8	45.5	160				
	04	48	23.7	20.0	600				
	05	110	12.5	10.3	3,400				
	06	120	16.8	14.3	3,400				
	07/08	220/240	6.2/7.2	5.1/5.9	13,600				
RET 3-P AC Coil	01	6	310	270	6.7	Abt. 1.6 to 2.0VA (60 Hz)	80% Maximum	30% Minimum	110%
	02	12	159	134	24				
	03	24	80	67	100				
	04	48	38	33	410				
	05	110	16	13.7	2,300				
	06	120	15.4	13.2	2,300				
	07/08	220/240	10	8.5	8,650				
RET 4-P AC Coil	01	6	386	330	5	Abt. 1.95 to 2.5 VA (60 Hz)	80% Maximum	30% Minimum	110%
	02	12	199	170	20				
	03	24	93.6	80	78				
	04	48	46.8	40	350				
	05	110	25.5	21.8	1,600				
	06	120	24.5	21	1,600				
	07/08	220/240	13.1	11.2	6,700				
RET 1-P & 2-P DC Coil	01	6	150		40	Abt. 0.9 W	80% Maximum	10% Minimum	110%
	02	12	75		160				
	03	24	36.9		650				
	04	48	18.5		2,600				
	05	110	10		11,000				
	06	120	10		11,000				
	07/08	220/240	13.1		11.2				
RET 3-P DC Coil	01	6	234	25.7		Abt. 1.4 W	80% Maximum	10% Minimum	110%
	02	12	112	107					
	03	24	58.6	410					
	04	48	28.2	1,700					
	05	110	13	8,500					
	06	120	14.1	8,500					
	07/08	220/240	13.1	11.2					
RET 4-P DC Coil	01	6	240	25		Abt. 1.5 W	80% Maximum	10% Minimum	110%
	02	12	120	100					
	03	24	69	350					
	04	48	30	1,600					
	05	110	15.9	6,900					
	06	120	17.4	6,900					
	07/08	220/240	13.1	11.2					

Ordering Information:

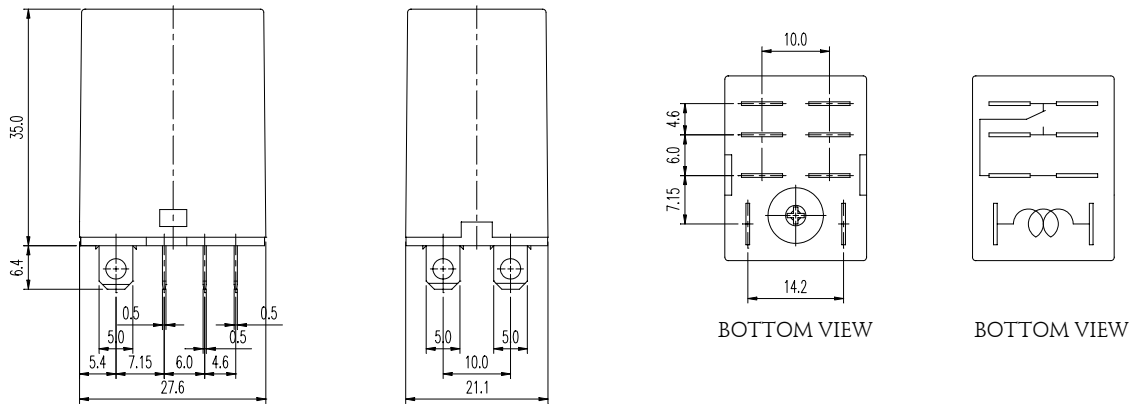


Dimension:

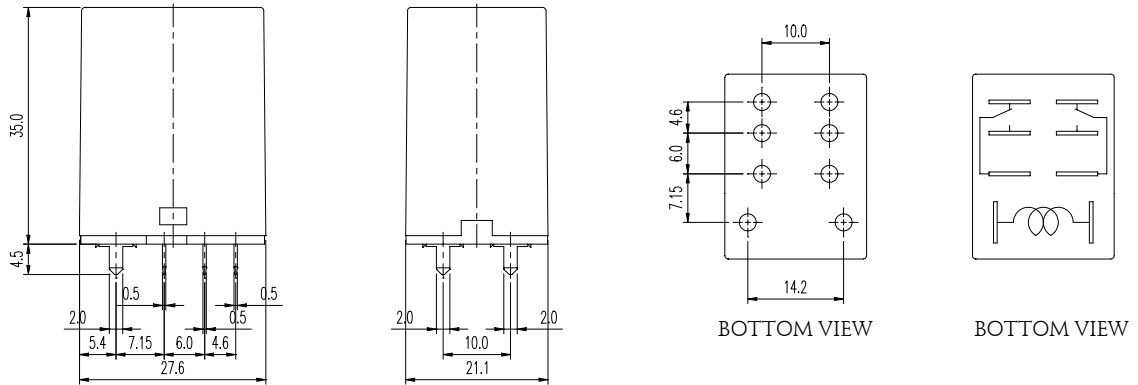
RET-1-P



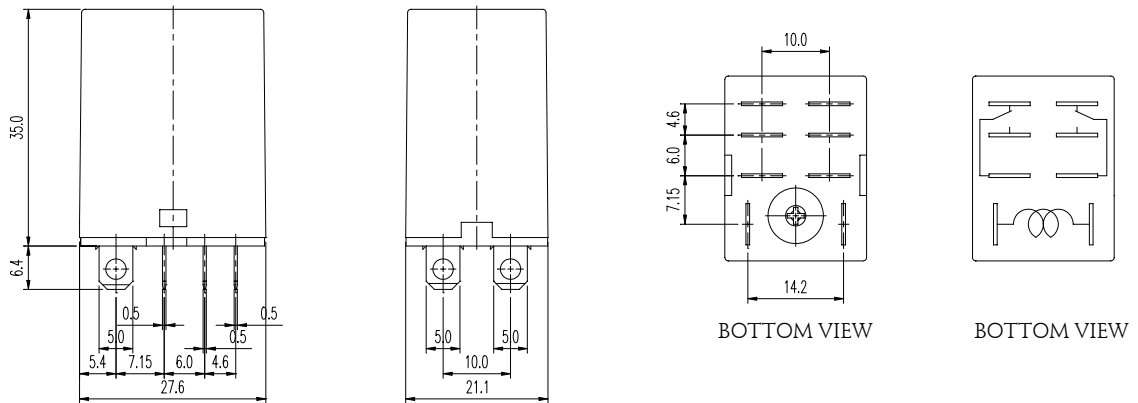
RET-1



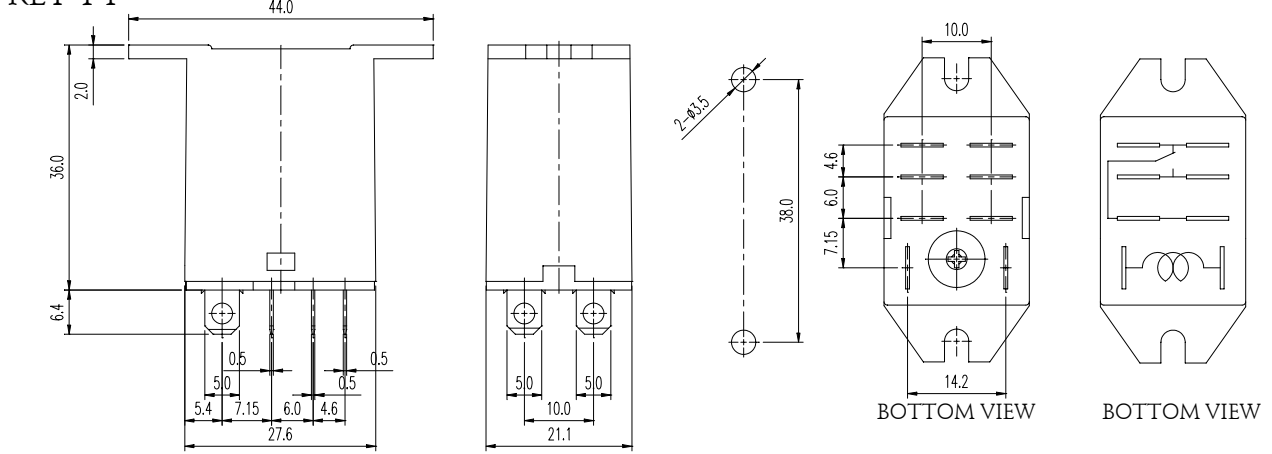
RET-2-P



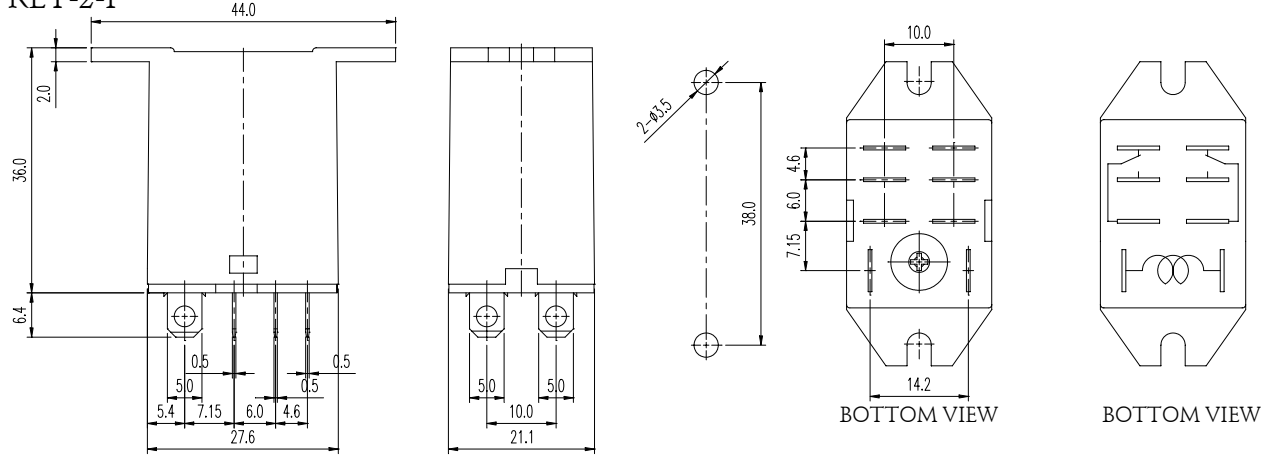
RET-2



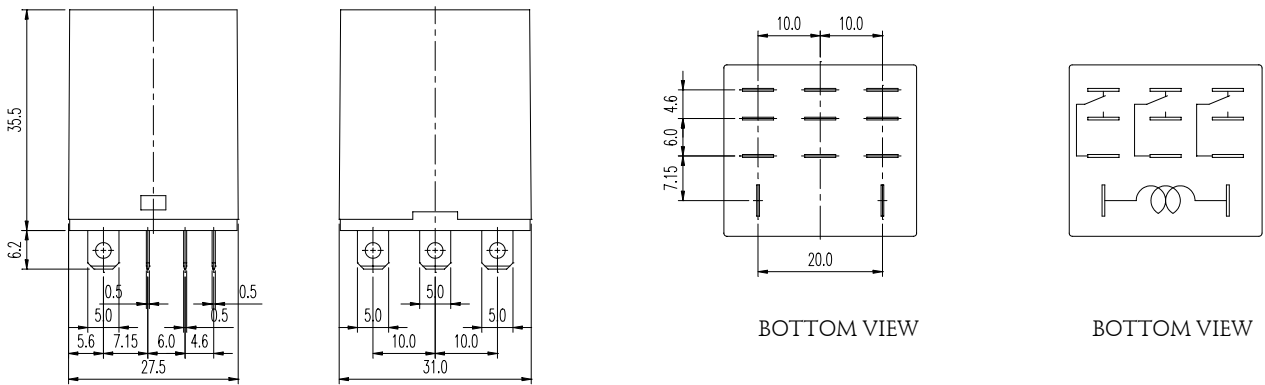
RET-1-F



RET-2-F



RET-3



RET-4

