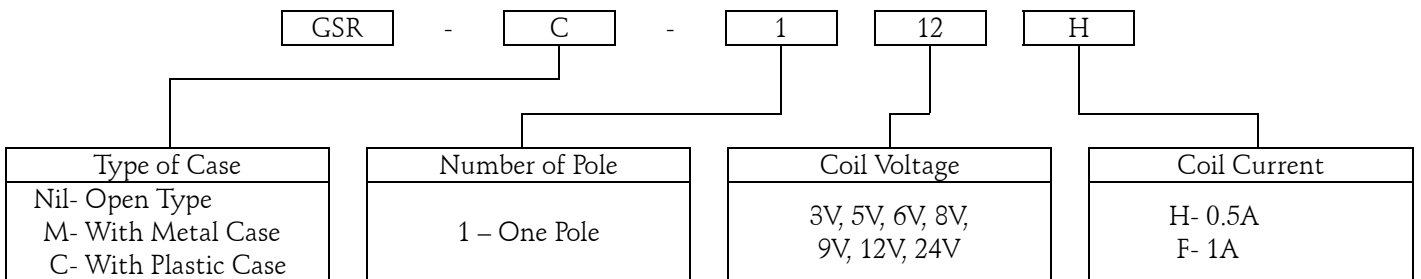




## Coil Specification (at 20°C)

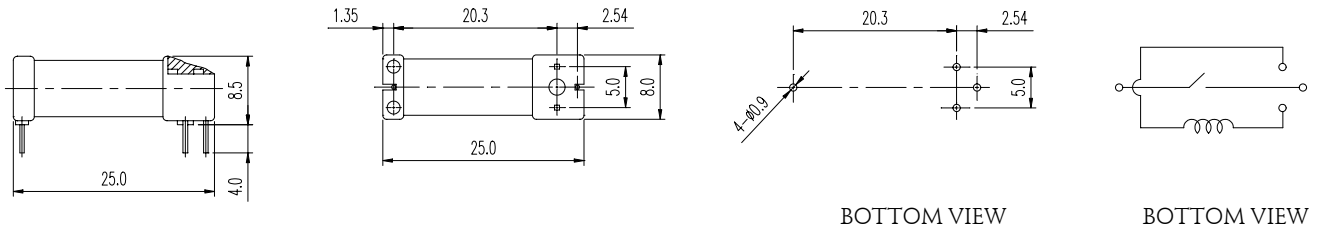
Coil Sensitivity	Nominal Voltage (VDC)	Nominal Current (mA)	Coil Resistance ( $\Omega \pm 10\%$ )	Power Consumption (W)	Pull-In Voltage (VDC)	Drop-Out Voltage (VDC)	Maximum Allowable Voltage (VDC)
GSR-H/F	3	47.6	63	Abt. 0.1 to 0.28	70% Maximum	10% Minimum	160%
	5	20.0	250				
	6	24.0	250				
	8	11.4	700				
	9	12.9	700				
	12	11.4	1,050				
	24	11.5	2,080				

## Ordering Information:



## Dimension:

GSR-1a /GSR-1b



GSR-C-1a /GSR-M-1b

GSR-M-1a /GSR-M-1b

